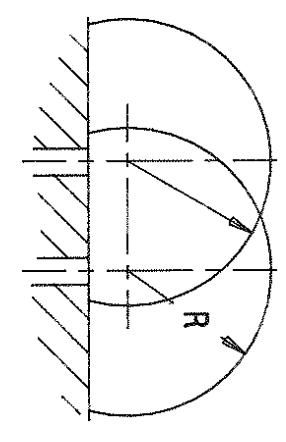


END VIEW



TOP VIEW

MAX. TONG TIP REACH AT THE DIMENSION "L"

Dimensions in inches		Typical	Recom.	Dimensions in inches		Typical	Recom.
A	Removal clearance	66.85		I	Minimum cell depth	21.35	
B	Centerline distance	34		L	Operating height	40	
C	Slave overhang (min. 6.5)	10		M	Mounting height	78	
D	Master overhang (min. 15.75)	18		R	Tong tip radius	36.8	
E	Min. height clearance	16.5		S	Separation	28	
F	Master collapsed length	24.35		W	Wall thickness	6	
G	Slave collapsed length	24.35		Z	"Z" Motion (min. 21)	24	
H	Slave extended length	48.35					

ALTERNATES and/or ACCESSORIES

Dwg. No.	Description
A-4881	Tamper lock C-4703
D-6757	Tong C-6740 (RCD) with A-_____ Jaws
A-9561	Motion locks
A-11320	Laminated shield _____" thick
A-11321	Labyrinth lam. shield _____" tot. thk.
A-11322	Thru tube air restriction C-9420
A-11341	Load hook with B-_____ adapter
A-11447	Wall tube B-_____
A-11647	Manipulator mount _____
A-12665	External labyrinth shields B-12048 and B-12050 _____" total thickness
A-12666	External thru tube shield _____" thick
A-14509	Booting A-_____
B-18061	Tong C-18059 (SRL) with A-_____ Jaws
A-27534	External air restriction C-20384
C-30357	Tamper Lock (Pistol Grip)

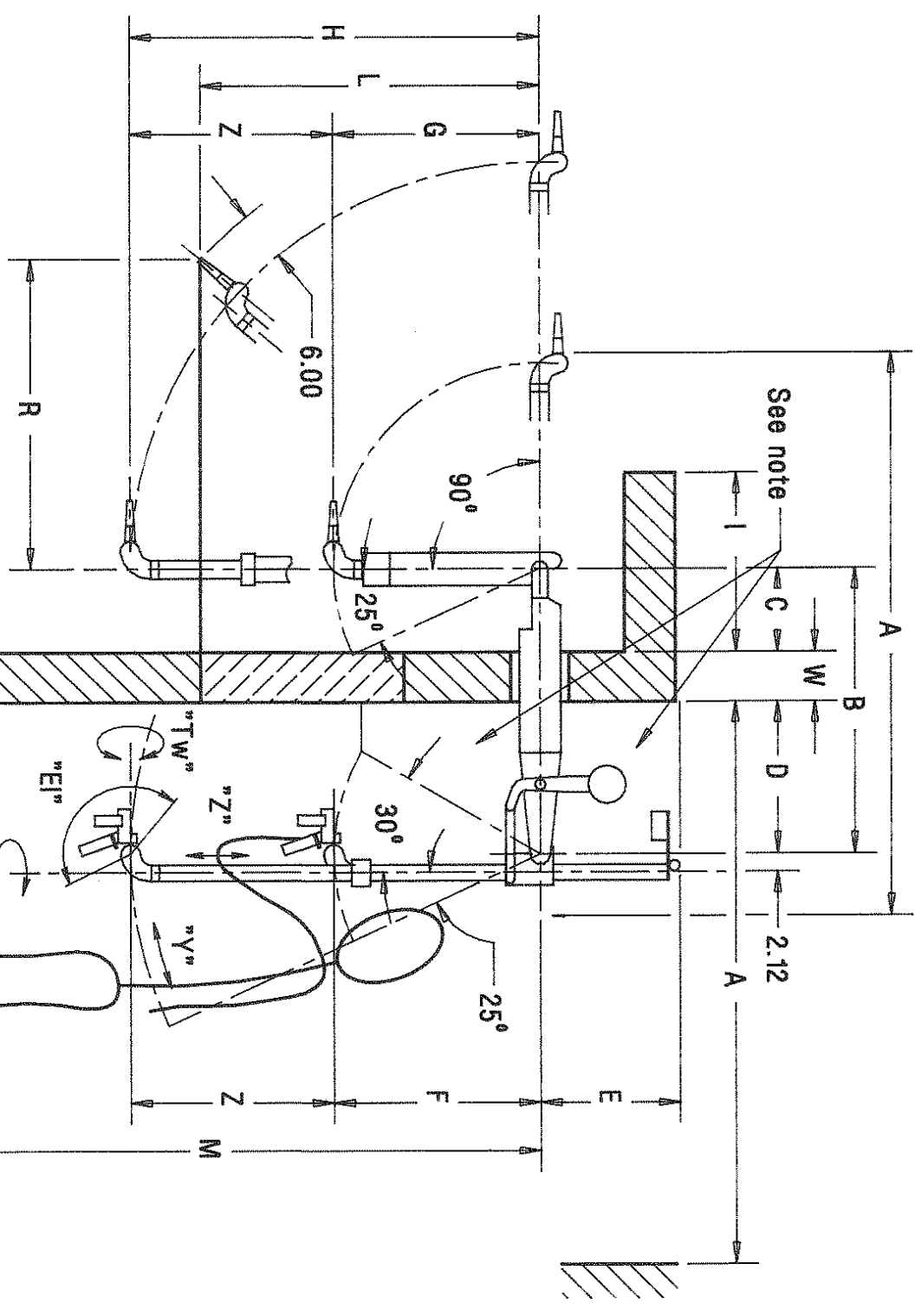
FORMULAS

- A = B + G + 8.5
  - I = G - 3
  - H =  $\sqrt{R^2 + L^2} - 6$
  - R =  $\sqrt{(H + 6)^2 - L^2}$
- For manipulator dimensions
- G = 0.5 Z + 12.35
  - H = 1.5 Z + 12.35
  - Z = 0.666 H - 8.2
  - F + E = Z + 16.85

F usually equal to G but can be larger or smaller than G for operator comfort (min. F = 12").

CENTRAL RESEARCH LABORATORIES  
RED WING, MINNESOTA  
A DOVER DIVERSIFIED COMPANY

App.	CEJ	DATE	12-2-92	Dwg. No.	B-37473
CHK.		DATE			
DR.	D.H.	DATE	12-2-92		



SIDE ELEVATION SCALE 1:20

NOTE: Allow space for manipulator operation and accessories.

MASTER - SLAVE MANIPULATOR  
MOD. G-LD  
GENERAL AND INSTALLED ASSEMBLY  
(ENGLISH)  
B-37473

REVISIONS