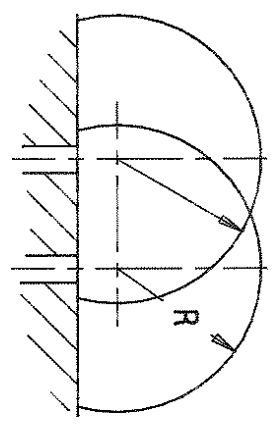


END VIEW



TOP VIEW

MAX. TONG TIP REACH AT THE DIMENSION "L"

SCALE 1:50

ALTERNATES and/or ACCESSORIES

Dwg. No.	Description
A-4881	Tamper lock C-4703
D-6757	Tong C-6740 (RCD) with A-_____ Jaws
D-6947	Tong C-6225 (SRL) with A-_____ Jaws
A-9561	Motion locks
A-11320	Laminated shield _____ mm thick
A-11321	Labyrinth lam. shield _____ mm tot. thk.
A-11322	Thru tube air restriction C-9420
A-11341	Load hook with B-_____ adapter
A-11447	Wall tube B-_____
A-11647	Manipulator mount _____
A-12665	External labyrinth shields B-12048 and B-12050 _____ mm total thickness
A-12666	External thru tube shield _____ mm thick
A-14509	Booting A-_____
A-27534	External air restriction C-20384
C-30357	Tamper Lock (Pistol Grip)

FORMULAS

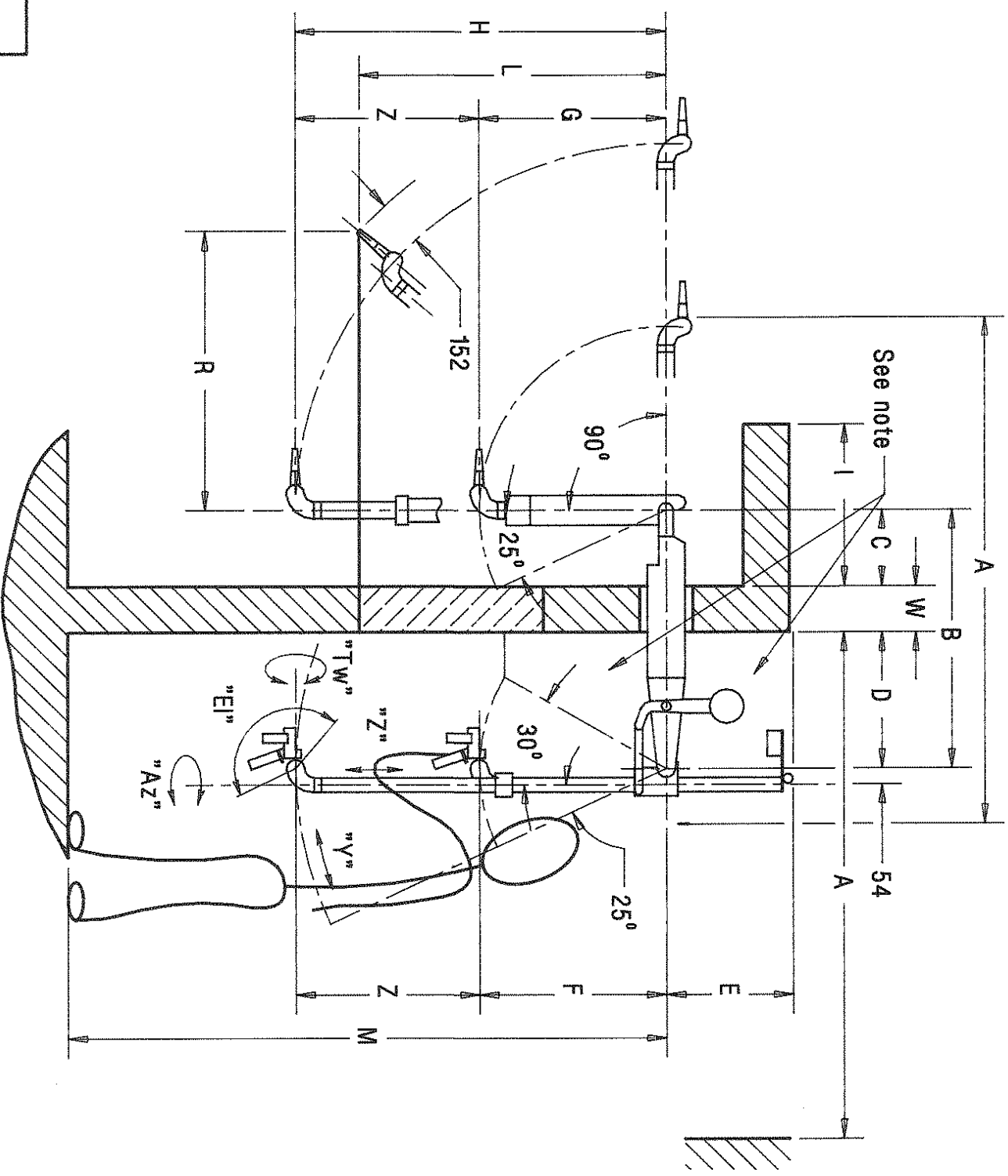
$A = B + G + 216$
 $I = G - 76$
 $H = \sqrt{R^2 + L^2} - 152$
 $R = \sqrt{(H + 152)^2 - L^2}$

For manipulator dimensions

$G = 0.5 Z + 314$
 $H = 1.5 Z + 314$
 $Z = 0.666 H - 208$
 $F + E = Z + 428$

F usually equal to G but can be larger or smaller than G for operator comfort (min. F = 305).

Dimensions in millimeters		Typical	Recom.	Dimensions in millimeters		Typical	Recom.
A	Removal clearance	1698		I	Minimum cell depth	542	
B	Centerline distance	864		L	Operating height	1016	
C	Slave overhang (min. 165)	254		M	Mounting height	1981	
D	Master overhang (min. 400)	457		R	Tong tip radius	935	
E	Min. height clearance	419		S	Separation	711	
F	Master collapsed length	618		W	Wall thickness	152	
G	Slave collapsed length	618		Z	"Z" Motion (min. 533)	610	
H	Slave extended length	1228					



SIDE ELEVATION SCALE 1:20

NOTE: Allow space for manipulator operation and accessories.

CENTRAL RESEARCH LABORATORIES
RED WING, MINNESOTA
A DOVER DIVERSIFIED COMPANY

APR. <i>Ceg</i>	DATE 12-2-92	DWG. NO. B-37474
CHK.	DATE	
DR. D.H.	DATE 12-2-92	

MASTER - SLAVE MANIPULATOR
MOD. G-LD
GENERAL AND INSTALLED ASSEMBLY
(METRIC)
B-37474

REVISIONS